

# TECHNICAL SPECIFICATION

8-Port, Small Panel Antenna,  
4×1695-5000MHz, 35/18/30deg, 12dBi/14dBi/13dBi, Fixed 0deg

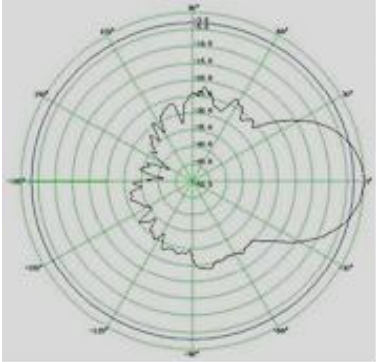
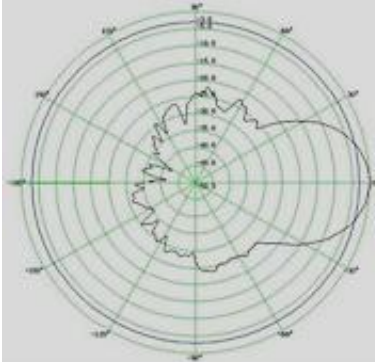



---

A.0	Dec 22, 2024	Zack	Michael	Mr. Wang
<b>Version</b>	<b>Date</b>	<b>Prepared</b>	<b>Reviewed</b>	<b>Approved</b>

---

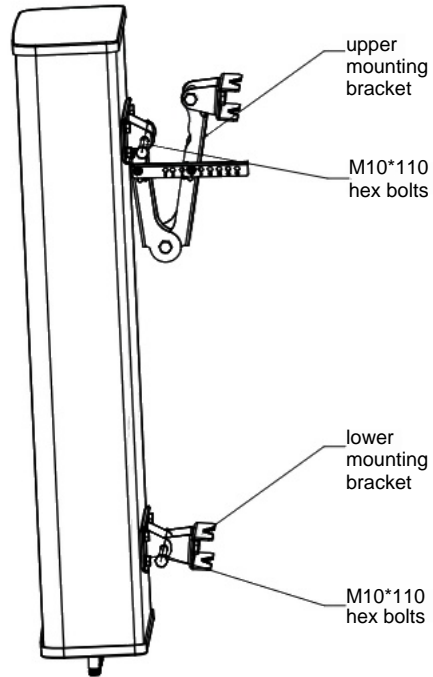
<b>Electrical Specifications</b>				
Description	8-Port, Small Panel Antenna, 4×1695-5000MHz, 35/18/30deg, 12dbi/14dBi/13dBi, Fixed 0deg			
ZTT Product Code	<b>HBZ8N351214</b>			
Frequency Range	MHz	4×1695-5000(Y1-Y8/P1-P8)		
Frequency Band	MHz	1695-2690	3300-3700	4800-5000
Gain Over All Tilts	dBi	12.3±0.3	14.5±0.5	13.4±0.4
Horizontal 3dB Beam Width	Deg	35±10	18±4	30±6
Vertical 3dB Beam Width	Deg	35±12	18±5	30±6
Horizontal Sidelobe	dB	18.5±0.6	13.6±0.5	15.7±0.5
Vertical Sidelobe	dB	18.5±0.6	13.6±0.5	15.7±0.5
Front to Back Ratio at 180Deg ±30Deg	dB	≥25		
Electrical Downtilt	Deg	0		
VSWR	/	≤1.6		
Isolation between Ports	dB	≥25		
Intermodulation IM3	dBc	≤-150(2×43 dBm carrier)	/	
Max. Power Per Port	Watt	100(at 50°C ambient temperature)		
Impedance	Ohm	50		
Polarization	Deg	±45		
<b>Mechanical Specifications</b>				
Antenna Dimensions	mm	900×380×150		
Antenna Net Weight	kg	11.5		
Packing Dimensions	mm	1105×475×265		
Antenna Gross Weight	kg	14.8		
Connector Type	/	8×4.3-10 Female		
Connector Position	/	Bottom		
Radiator Material	/	Low loss circuit board		
Radome Material / Color	/	UPVC		
Reflector Material	/	Aluminum		
Storage Temperature	°C	-40 to +70		
Operating Temperature	°C	-40 to +70		
Humidity	/	5% to 95%		
Max. operational Wind Speed	km/h	126		
Wind Load @Rated Wind Front	N	304		
Wind Load @Rated Wind Side	N	50		

Wind Load @Rated Wind Rear	N	340
Lightning Protection	/	DC ground
<b>Accessories</b>		
Downtilt Kit (mechanical)	Deg	0-8
Mounting Accessories (clamp)	/	Included with antenna
Mounting Pipe Diameter	mm	50-115
<b>Reference Pattern</b>		
1695-5000MHz		
Horizontal Pattern		Vertical Pattern
		
<b>Overall appearance of antenna</b>		
		
All data are based on NGMN recommendations on Base Station Antenna Standards (BASTA V11.1).		

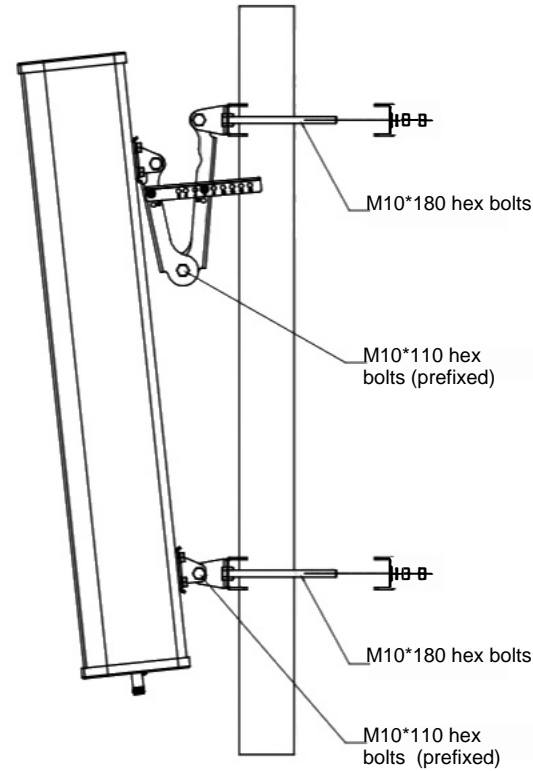


## Antenna Installation Guide

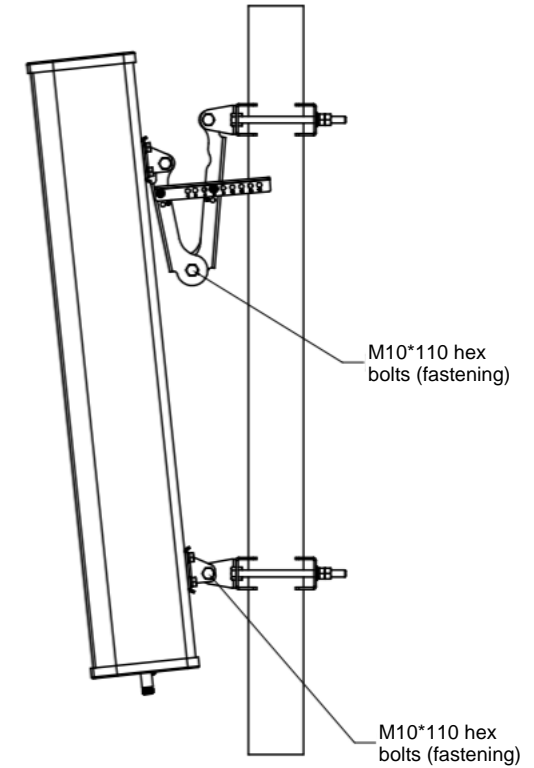
1)assemble bracket



2)assemble antenna



3)adjust mechanical downtilt



### 1)assemble bracket

1. Identify the quantity of materials
2. assemble the upper and lower mounting bracket on the antenna, and fasten them with M10\*110 hex bolts.

### 2)assemble antenna

1. assemble U-clamp on the pole, attach U-clamp to another U-clamp with M10\*180 bolts
2. attach the flat washer, spring washer and nut on the bolts in turn
3. fasten all the M10\*180 bolts

### 3)adjust the mechanical downtilt

1. adjust to required downtilt according to the scale
2. fasten the prefixed M10\*110 hex bolts, and fix the scale
3. complete assembly